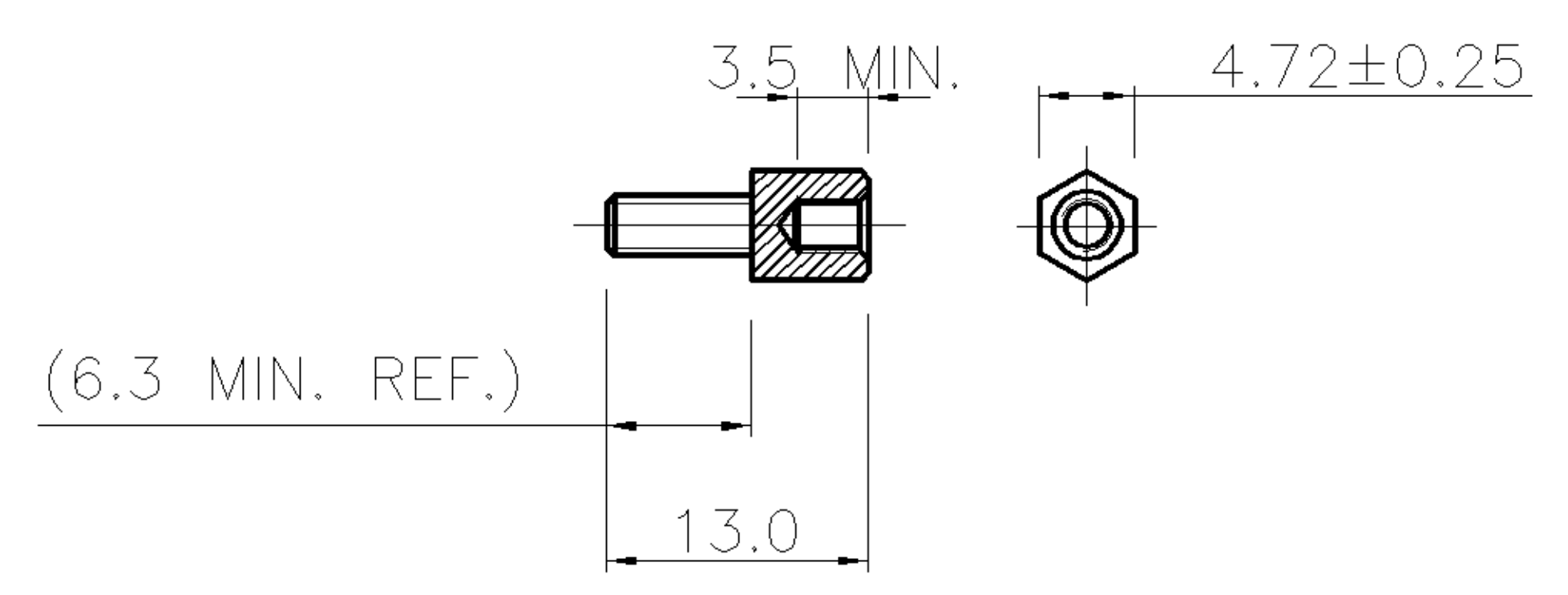
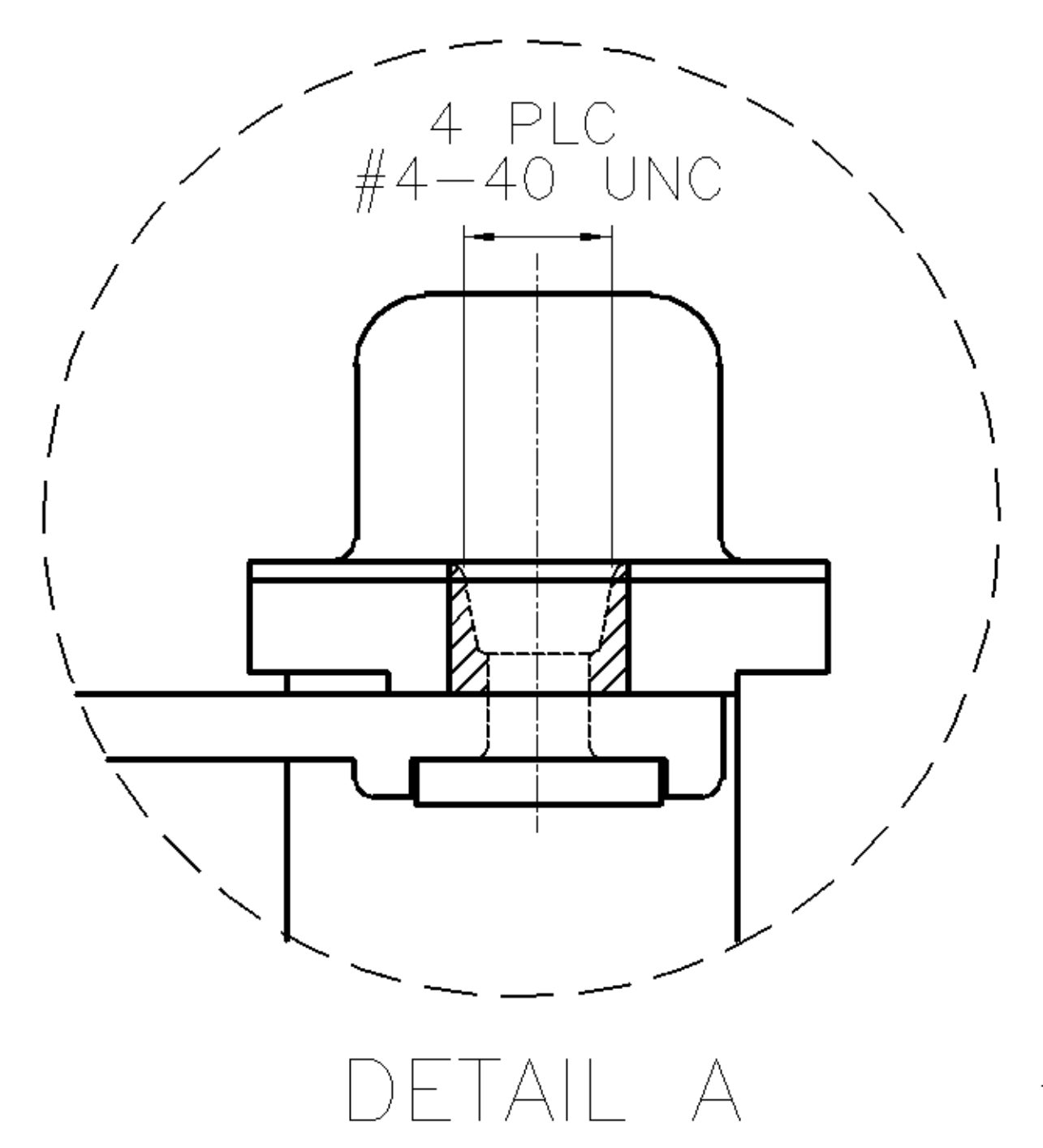
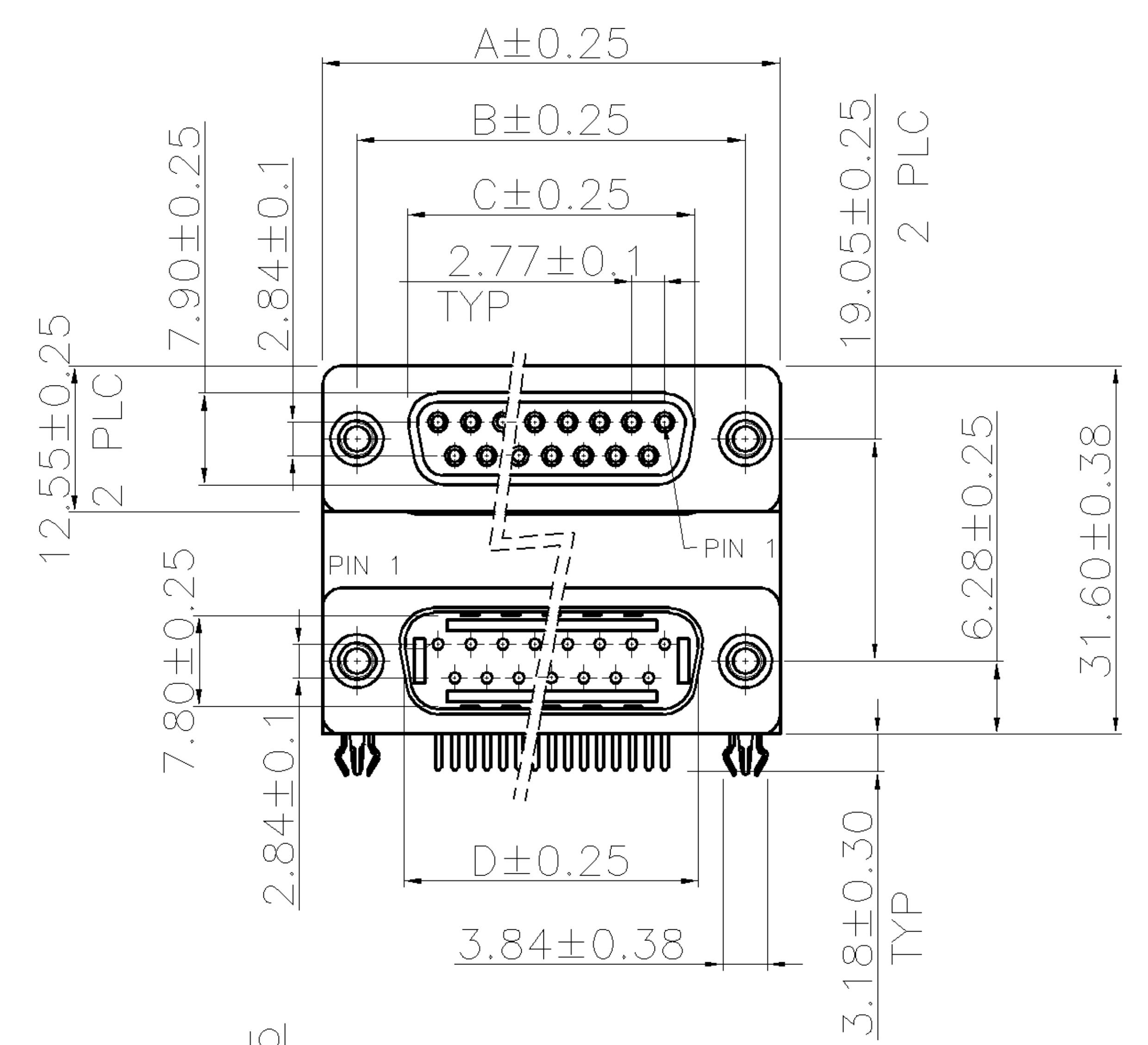


THIS DRAWING IS UNPUBLISHED. RELEASED FOR PUBLICATION
 © COPYRIGHT BY TYCO ELECTRONICS CORPORATION. ALL RIGHTS RESERVED.

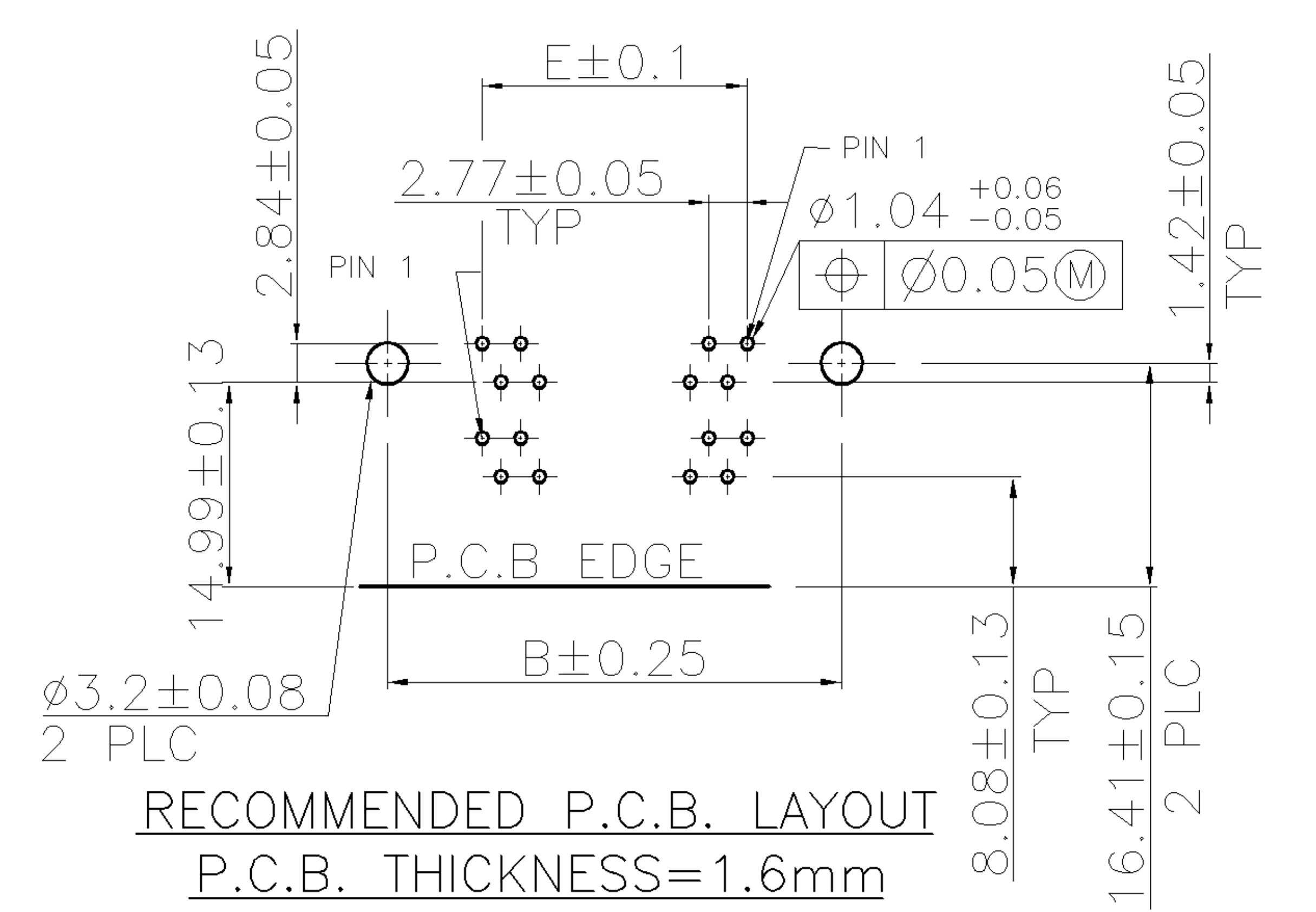
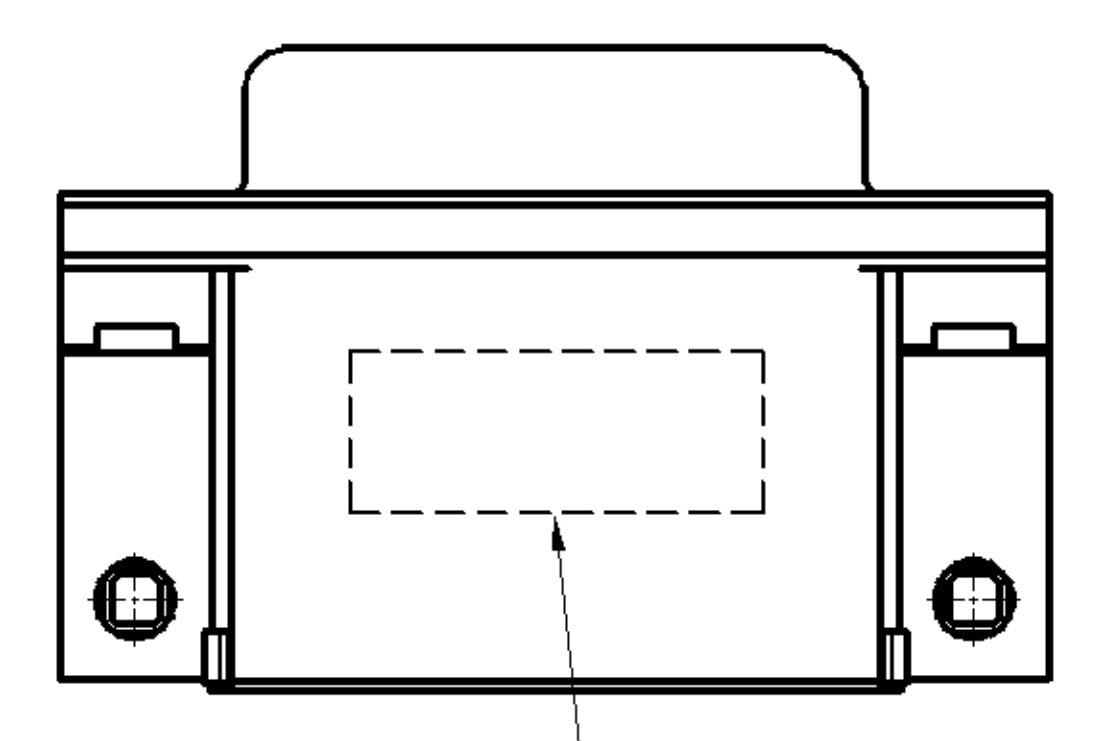
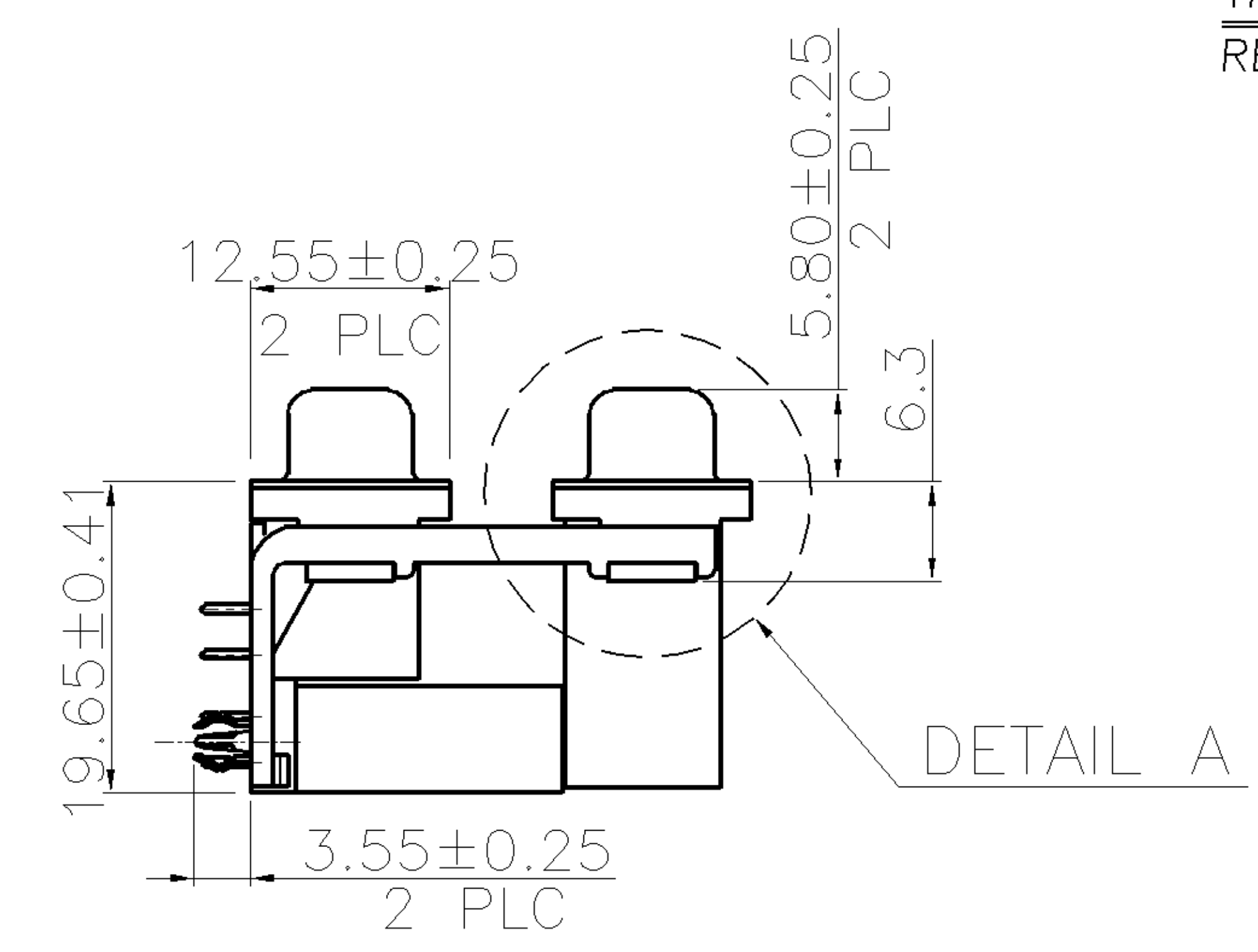
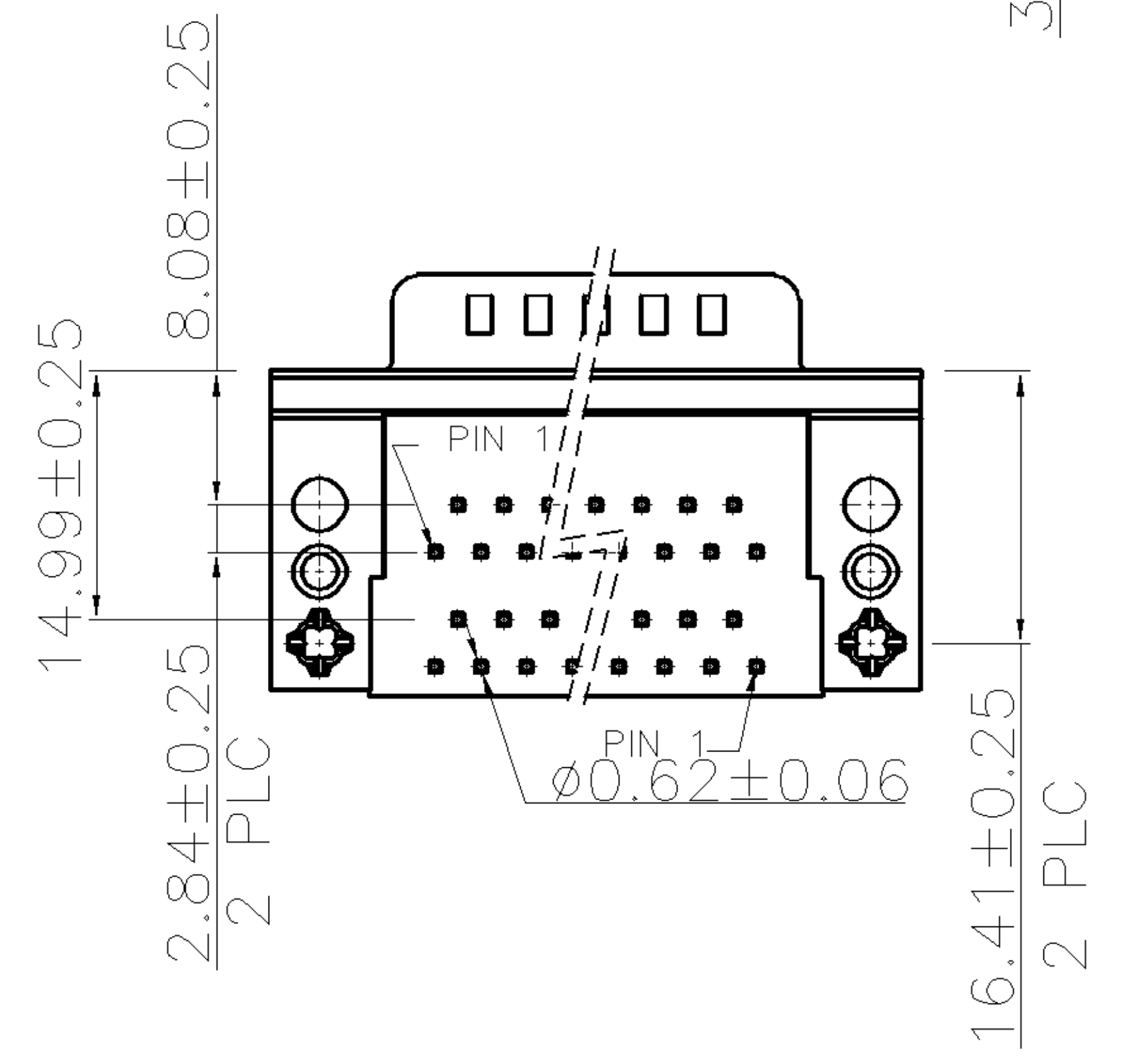
LOC DW	DIST —	REVISIONS			
P	LTR	DESCRIPTION	DATE	DWN	APVD
	A	RELEASED	19OCT06	JL	WK



THIS PRODUCT EQUIPPED WITH NO SCREW
 RECOMMENDED OUTSOURCING SCREW TYPE

NOTES:

- MATERIAL:
 - HOUSING/BACK COVER: THERMOPLASTIC(PBT), UL94V-0; COLOR: SEE TABLE.
 - CONTACTS: PLUG: BRASS. RCPT.: PHOSPHOR BRONZE.
 - BOARDLOCK: BRASS.
 - BRACKET: ZINC ALLOY.
 - SHELL: STEEL.
- FINISH:
 - CONTACT: GOLD PLATING(SEE TABLE) ON CONTACT AREA 2.54um[100u"] MIN. MATTE TIN PLATING ON SOLDER TAILS 1.27um[50u"] MIN. NICKEL UNDERPLATING OVERALL
 - BOARDLOCK: 1.52um[60u"] MIN. MATTE TIN OVERALL.
 - SHELL: 1.27um[50u"] MIN. NICKEL OVERALL.
- APPLICATION:
 - WAVE SOLDER CAPABLE TO 265°C PER TYCO SPEC. 109-202, CONDITION B.
 - THREADED INSERTS AND SCREWLOCKS MUST WITHSTAND 6 IN-LBS TORQUE.



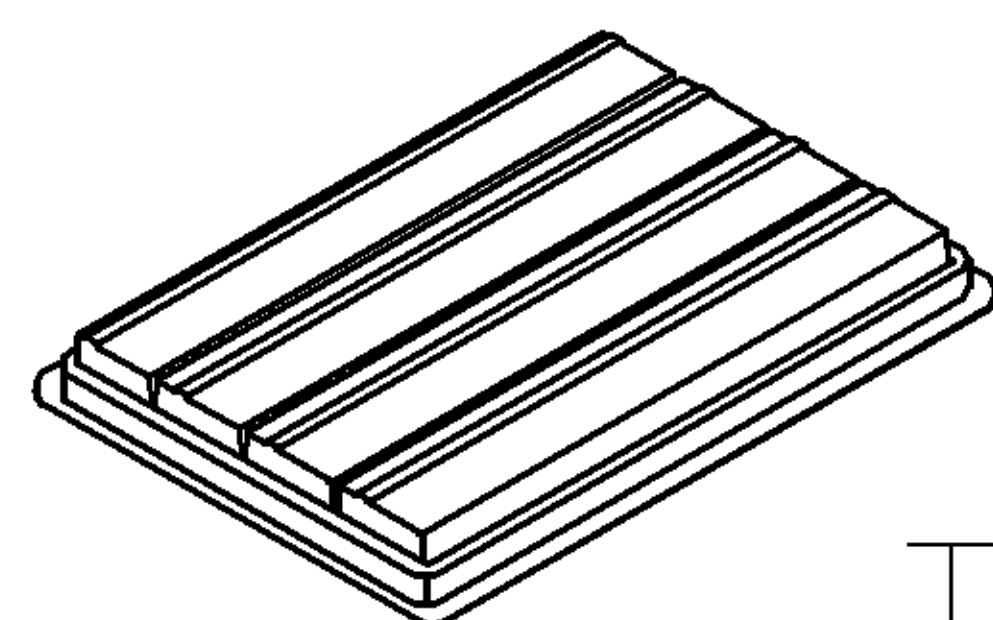
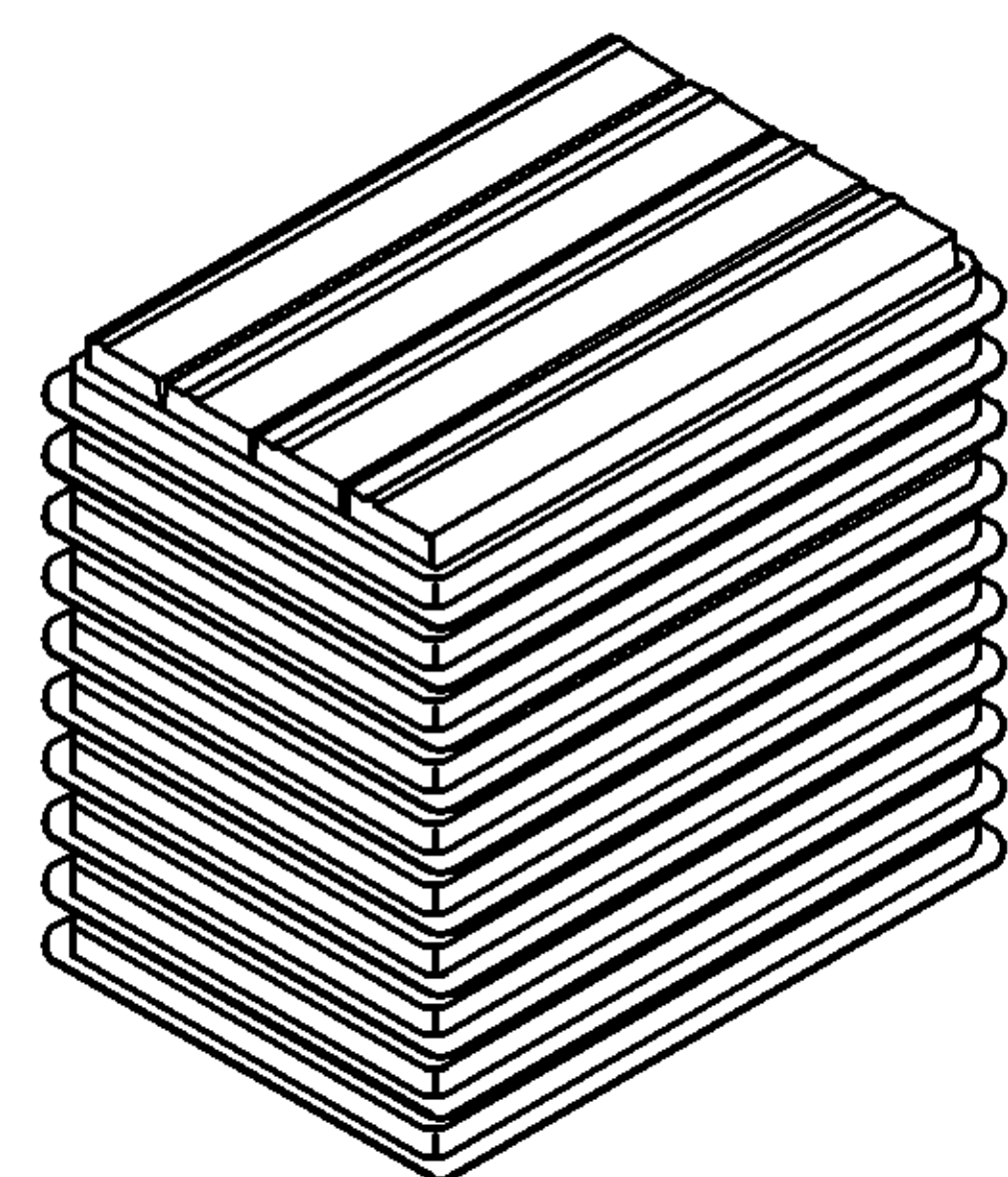
3-1734207-X	37-37	69.34	63.50	55.42	54.80	49.86
2-1734207-X	25-25	53.10	47.04	38.96	38.30	33.24
1-1734207-X	15-15	39.30	33.30	25.25	24.60	19.39
1734207-X	9-9	30.95	24.99	16.92	16.20	11.08
PART NO.	PINS	A	B	C	D	E

X-1734207-6	30 u"	PC99/ACTUAL COLOR	37-37 NOT AVAILABLE
X-1734207-5	10 u"	PC99/ACTUAL COLOR	
X-1734207-4	GOLD FLASH	PC99/ACTUAL COLOR	
X-1734207-3	30 u"	BLACK	
X-1734207-2	10 u"	BLACK	
X-1734207-1	GOLD FLASH	BLACK	
PART NO.	GOLD PLATING	HSG COLOR	

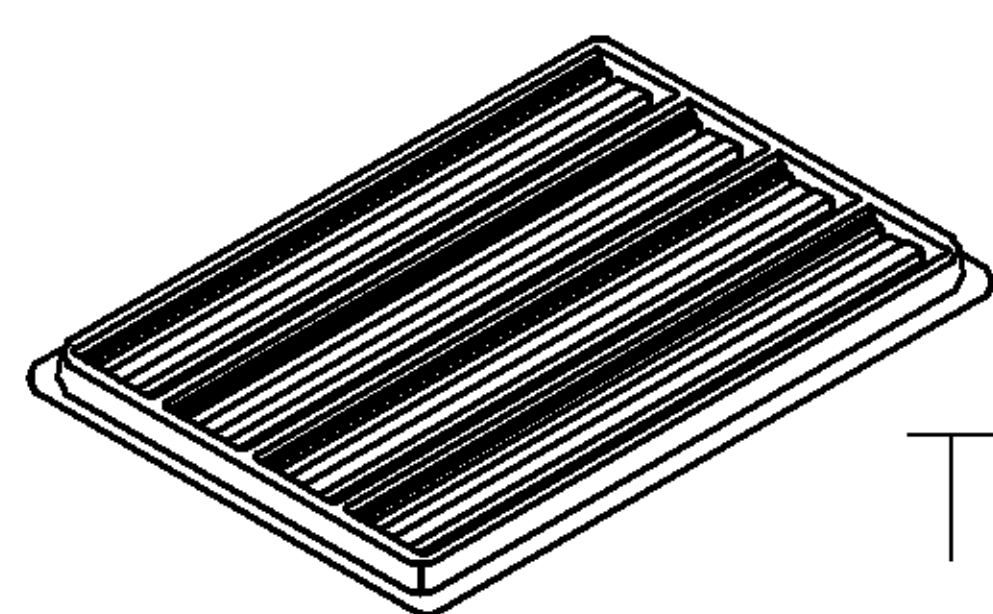
THIS DRAWING IS A CONTROLLED DOCUMENT.		DWN J. LEE 19OCT2006	tyco Tyco Holdings (Bermuda)	
DIMENSIONS: MM		CHK S. HOU 19OCT2006	Electronics VII Ltd. Taiwan Branch	
TOLERANCES UNLESS OTHERWISE SPECIFIED:		APVD W.J. KE 19OCT2006	NAME	
0 PLC ± 0.5		PRODUCT SPEC		
1 PLC ± 0.3		108-57517		
2 PLC ± 0.2		QUALIFICATION TEST REPORT		
3 PLC ± 0.15		501-57590		
4 PLC ANGLES ± 3'		WEIGHT SEE TABLE		
MATERIAL SEE NOTE		CUSTOMER DRAWING		
FINISH SEE NOTE		SIZE A3 CAGE CODE 00779 DRAWING NO C-1734207 RESTRICTED TO —		
		SCALE — SHEET 1 OF 2 REV A		

THIS DRAWING IS UNPUBLISHED. RELEASED FOR PUBLICATION
 © COPYRIGHT BY TYCO ELECTRONICS CORPORATION. ALL RIGHTS RESERVED.

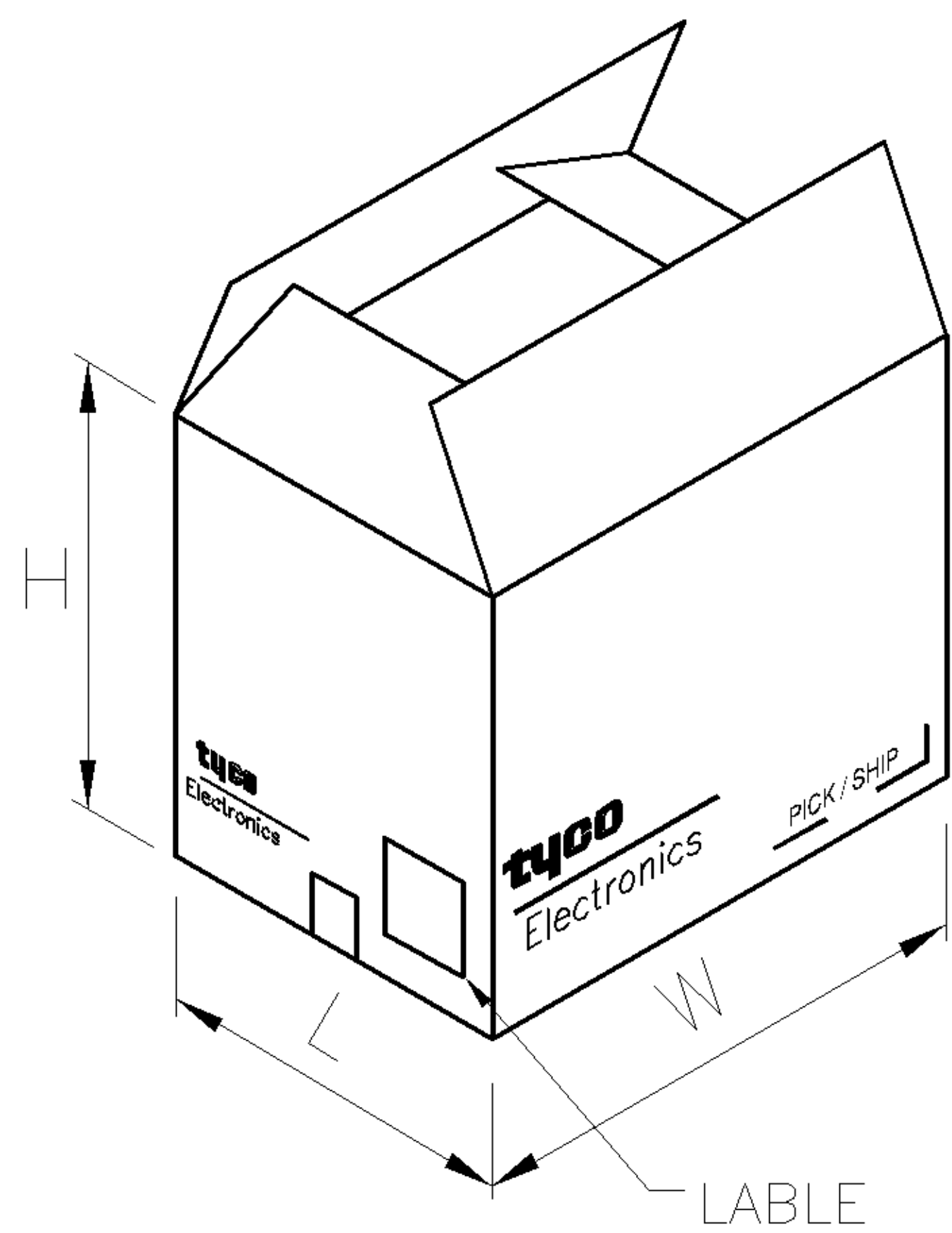
LOC	DIST	REVISIONS			
P	LTR	DESCRIPTION	DATE	DWN	APVD
		SEE SHEET 1.			



TOP COVER



TRAY

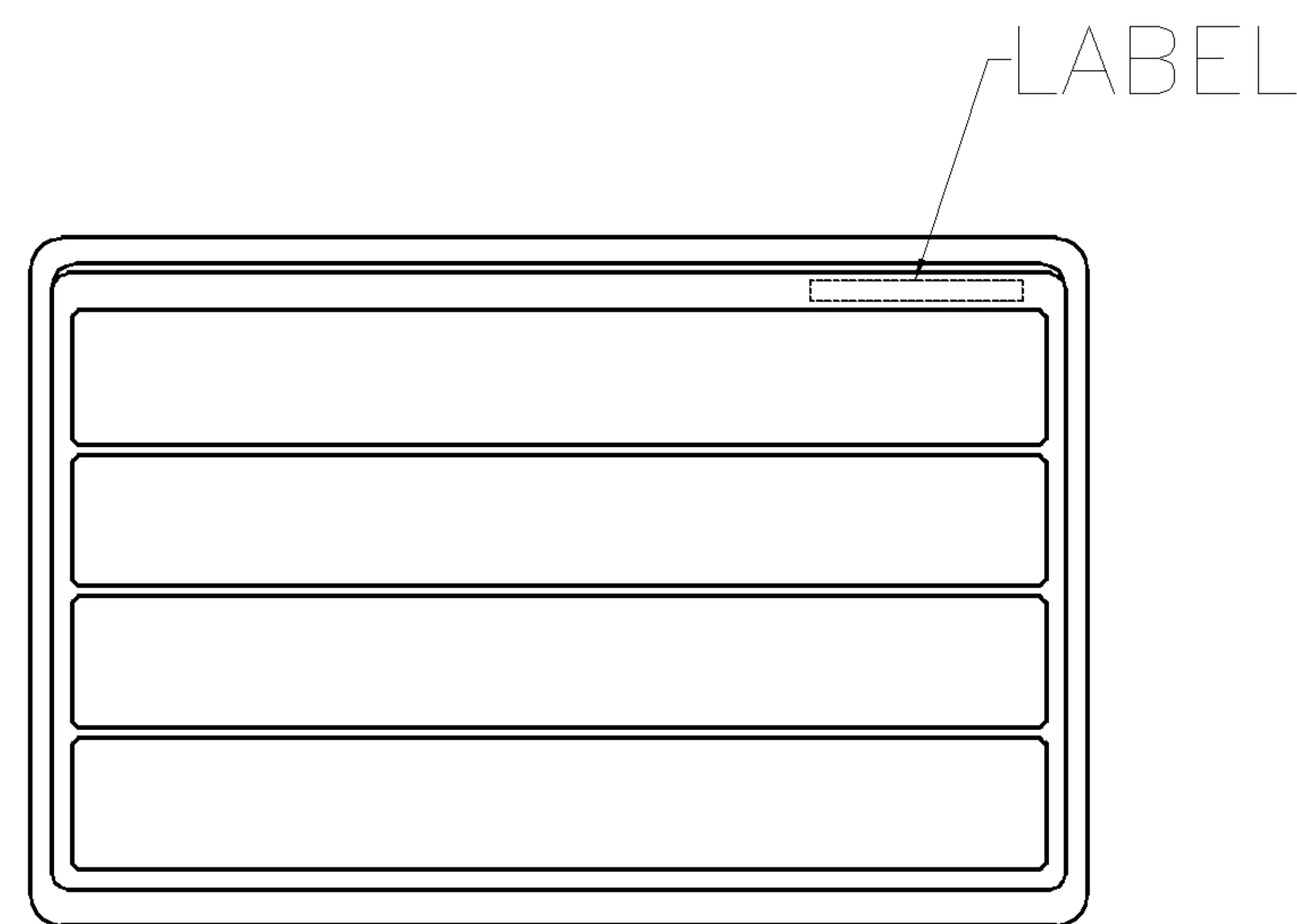


CARTON

NOTES:

- DIMENSION:
 TRAY: L=315, W=215, H=30
 CARTON: L=335, W=230, H=280
- TRAY: PS or PET
- QUANTITY:

PIN NO.	9-9	15-15	25-25	37-37
PCS/TRAY	36	28	20	16
TRAY/CARTON	10	10	10	10
PCS/CARTON	360	280	200	160
NET WEIGHT	9.72	9.48	9.30	10.3
GROSS WEIGHT	11.22	10.91	10.80	11.46



TRAY LAYOUT

THIS DRAWING IS A CONTROLLED DOCUMENT.		DWN J. LEE 19OCT2006	tyco Tyco Holdings (Bermuda)													
DIMENSIONS: MM		CHK S. HOU 19OCT2006	Electronics VII Ltd. Taiwan Branch													
TOLERANCES UNLESS OTHERWISE SPECIFIED:		APVD W.J. KE 19OCT2006	NAME													
<table border="1"> <tr><td>0 PLC</td><td>± -</td></tr> <tr><td>1 PLC</td><td>± -</td></tr> <tr><td>2 PLC</td><td>± -</td></tr> <tr><td>3 PLC</td><td>± -</td></tr> <tr><td>4 PLC</td><td>± -</td></tr> <tr><td>ANGLES</td><td>± -</td></tr> </table>		0 PLC	± -	1 PLC	± -	2 PLC	± -	3 PLC	± -	4 PLC	± -	ANGLES	± -	PRODUCT SPEC	D-SUB STACKED RCPT. OVER PLUG R/A TYPE, THREAD INSERTS	
0 PLC	± -															
1 PLC	± -															
2 PLC	± -															
3 PLC	± -															
4 PLC	± -															
ANGLES	± -															
MATERIAL		APPLICATION SPEC														
FINISH		WEIGHT	SIZE	CAGE CODE	DRAWING NO	RESTRICTED TO										
		CUSTOMER DRAWING	A3	00779	C=1734207	-										
		SCALE	SHEET		REV											
		-	2 OF 2		A											